



KIMPTON

KIMPTON  
**CLOCKTOWER**  
HOTEL



K I M P T O N

# CLOCKTOWER

H O T E L

A luxury hotel with an industrial soul that is sprawled out on Oxford Street at the heart of Manchester, a rich, complex city with cool-kid cult status. Manchester is the more rebellious cousin to London. But that doesn't mean it's lacking the hallmarks of a dynamic urban centre: an amazing food scene with a new crop of forward-thinking chefs, galleries and museums that celebrate local artists and makers and quaint parks sweeping swaths of green over the gritty, industrial streetscape. Whoever you are and wherever you come from, you'll be welcomed into the textured fabric of this come-one-come-all city.

Kimpton Clocktower has 17 meeting and event spaces that include the Whitworth Rooms, which can be used in conjunction with the Ballroom to create flexible conferencing facilities for more than 1,500 delegates.

In addition to having some of the best large-scale conference rooms in the UK, you will also find a suite of smaller spaces for meetings and private dining, from the prestige of the Refuge Assurance Directors' rooms to smaller boardroom and classroom spaces in the Clock Tower building.

Kimpton Clocktower sits proudly on Oxford Road, just moments from Manchester's train station, and features 270 loft-style bedrooms, including Suite 51, the only three-bedroom hotel suite in the city, and a magnificent, triple-height lobby. Add to that The Refuge Dining Room, Public Bar, Winter Garden and Den, our 10,000-square-foot restaurant that has become a meeting point for locals from all walks of life. Guests can also enjoy the on-site Clocktower Florist and our daily Social Hour in the Post Room, creating a truly memorable stay in the heart of the city.

[kimptonclocktowerhotel.com](http://kimptonclocktowerhotel.com)  
Oxford St, Manchester M60 7HA



THE BUILDINGS

MDCCLXXXV

RESTROOMS

EXIT



WERE ERECTED IN

MUSEUM OF THE CITY OF LONDON

85

# ROOMS & SUITE NO.51

The accommodations at Kimpton Clocktower Hotel boast sweeping double-height windows and many rooms have original features. With stunning architecture—the 19th-century original building, the clocktower extension, and the 1930s addition—no two of the rooms and suites are quite the same.



Suite No.51 Premium



Standard double

Suite No.51 offers the ultimate VIP experience and home away from home, with up to three luxury bedrooms and customisable amenities. Nestled within the original architectural style of Eclectic Baroque, the new suite is a transformed former Directors office – now a sanctuary of sophistication and luxury comfort.



# CLOCKTOWER MEETING ROOMS

Quirky and characterful, the seven Clock Tower meeting rooms sit on the mezzanine floor to the side of the main hotel lobby. They benefit from generous break-out space: use of the former Refuge Assurance Post Room, with larder-style snacks and refreshments throughout the day.





# POST ROOM

This generous breakout space was once the Post Room for the Refuge Assurance Company. Guests in the Clock Tower meeting rooms can come here to step away from a meeting to stretch their legs, take a break and help themselves hot and cold refreshments throughout the day. Lunch is also served here as well as healthy (and of course, not so healthy) snacks to keep you fueled throughout the day.

# DIRECTORS' ROOM

Built in 1912 as part of Paul Waterhouse's extension to the original Refuge Assurance building, the Directors' Rooms on the second floor of the Refuge Building were even furnished with their own elaborate staircase in bronze and Carrara marble. These remain the grandest rooms in the whole of the hotel, brimming with architectural detail and craftsmanship, certain to create a lasting impression.





# OAK ROOMS

| Only slightly more modest, the Oak Rooms sit above the Ballroom and provide flexible meeting spaces for up to 100 guests.





# THE BALLROOM



Formerly the Refuge Assurance staff dining room, our Ballroom is the largest single event space within a hotel in the northwest of England. It can also be used in conjunction with the Whitworth Rooms to maximise flexibility and numbers. Combining many original, listed features with all of the technology you need to run a large conference, the Ballroom even has its own stage, as well as natural daylight, a private bar and a dedicated, private entrance from Waterhouse Way.







# THE WHITWORTH

We've created a large open-plan space that can be cleverly separated with soundproof dividers to make three smaller rooms or combined with the Ballroom to create a conference or event on a truly grand scale. The Whitworth occupies the whole of the ground floor of the Whitworth Building, with double-height windows along two walls and a full bar that can be opened or closed as the occasion demands.

# RESTAURANT QUALITY DINING





Our Executive Chef brings many years of experience cooking at some of the most exclusive hotels around the world, as well as some of the most detail oriented and celebrated guests. He and his talented team have crafted a collection of menus that deliver restaurant-quality dishes on a grand scale, perfect for banquets and events. Equally at home preparing a nourishing working lunch for busy delegates or an indulgent meal in the Directors' Boardroom, their passion for flavour and attention to detail shine through in every dish.



# REFUGE

The beating heart of Kimpton Clocktower Hotel, The Refuge is 10,000 sq ft of drinking and dining for everyone and anyone. Food features flavours from all over the world, with no airs or graces; sleeves up, dig in.

Whether you're looking to host an intimate get-together in our private dining room or push the boat out and takeover The Den and Winter Garden, we've got the perfect space for every event.

*Come as you are*

SCAN TO SEE MENUS:



[refugemcr.co.uk](http://refugemcr.co.uk)  
Oxford St, Manchester M60 7HA





# PRIVATE DINING ROOM

## BY DAY

A work space for teams of four to 10, The Private Dining Room is your out of office hideaway for ideas that make sense. It's where we go when we can see a goal on the horizon or the going gets tough! Designed to facilitate thought, inside you'll find an easel and sketchpad, sand timers, articles, books and curiosities. Solutions are rarely born out of branded stationery and harsh lighting - you won't find those here (you have your favourite pen and pad anyway, right?). The price includes a buffet breakfast, unlimited hot and soft drinks and a lunch from our feasting menu. No sandwiches or salad bars in sight.

*Available times:*

Monday to Thursday, 9am to 4.30pm

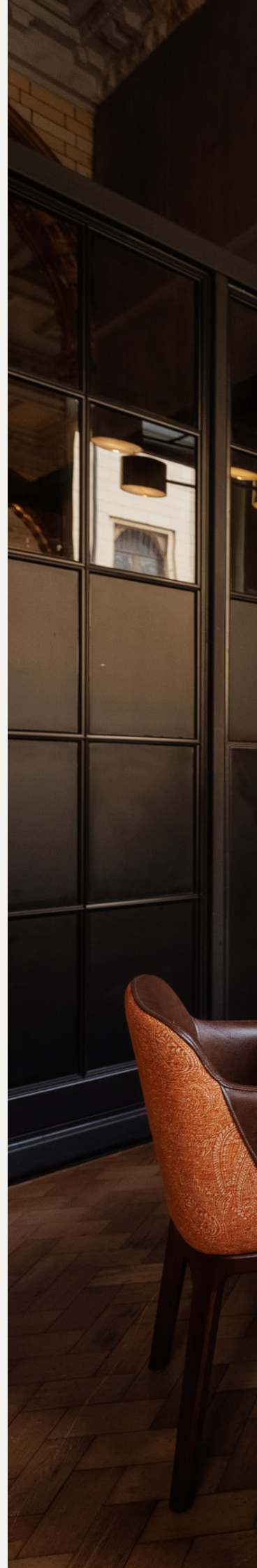
## BY NIGHT

Your private space for celebrations with friends, family and colleagues. Bring yourself and 9 of your nearest and dearest for dinner from our feasting menu. Sleeves up, dig in.

*Available times:*

Monday to Thursday from 5pm, Friday and Saturday from 5pm

Enquire by emailing [manchesterconference@ihg.com](mailto:manchesterconference@ihg.com)



**AM**  
to  
**PM**



# WINTER GARDEN

Located next to The Den, in the heart of The Refuge, The Winter Garden is a beautifully elegant space bringing the outside in, with foliage galore. It's perfect for canapé and drinks receptions before your main event, or simply for an intimate soirée.

## THE DETAILS

### CAPACITY

- Minimum capacity: 40
- Maximum capacity: 80
- Mixture of seated and standing

### THE PACKAGE

- Six canapés per person
- Champagne or pre-mixed cocktail on arrival
- Free-flowing Prosecco, beer, wine, cider and soft drinks
- Host included

### TIMINGS

- 1.30pm to 5.30pm Monday to Sunday
- 6.30pm to 11pm Sunday to Thursday
- 6.30pm to 12 midnight Friday and Saturday
- One additional hour: £500 for non-residents

### PAYMENT

- Enquire by emailing [manchesterconference@ihg.com](mailto:manchesterconference@ihg.com)

# THE DEN

The perfect spot for birthdays or work get-togethers, The Den is your own space that's still connected to the atmosphere of our Public Bar. Play videos or slide shows on the big screen and have a game of foosball or pool. The pool table also transforms into a dining station, where you can dive into sharing platters from our Den menu - a selection of our most popular dishes from The Dining Room. As the space is semi-private it shares the same music playlist as The Public Bar. From Thursday onwards our resident DJs play a mixture of swing, disco, funk and house.



## THE DETAILS

### CAPACITY

- Minimum capacity: 80
- Mixture of seated and standing

### THE PACKAGE

- Den menu
- Private bar

### TIMINGS

- 1.30pm to 5.30pm Monday to Sunday
- 6.30pm to 11pm Sunday to Thursday
- 6.30pm to 12 midnight Friday and Saturday
- One additional hour: £500 for non-residents

### PAYMENT

- Enquire by emailing [manchesterconference@ihg.com](mailto:manchesterconference@ihg.com)



# THE TERRACE

The Terrace is a unique urban courtyard connected to The Refuge. Enjoy music and dancing in the heart of the city, before moving into The Den to continue the party. Up to 150 people can be accommodated standing, with up to 80 people dining under cover. Soak up the vibrant and dynamic atmosphere of Manchester, and even hire your own DJ. The Terrace is also perfect for hosting red carpet entrances to special events in The Refuge.

## THE DETAILS

### CAPACITY

- Maximum capacity: 150
- Seated: 80
- Standing: 70

### THE PACKAGE

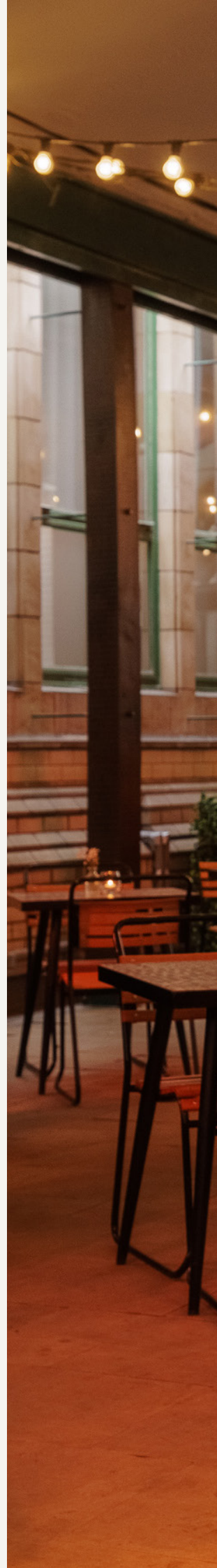
- Up to three food stalls
- Canapés
- Den menu
- Private bars: choose from The Terrace, The Den or for the perfect event, have both

### TIMINGS

- 1pm to 5.30pm
- 6.30pm to 9pm
- After The Terrace closes, The Den can still be used as a private area with your own bar until 11pm Sunday to Thursday and 12 midnight on Friday and Saturday.

### PAYMENT

- Enquire by emailing [manchesterconference@ihg.com](mailto:manchesterconference@ihg.com)





# COMBOS

Our versatile spaces can be combined in any way to suit your event. The Refuge is perfectly designed for flexible layouts, from main rooms to breakout areas. If your guest capacity fits comfortably, we'll work closely with you to create the ideal setup.





# THE VAULT

The Vault is your own private pub space, perfect for club nights or private events, just a few steps downstairs from The Refuge. With capacity to hold 300 people, this spacious room also has traditional brewery features, including a striking copper still, bar and comfortable booths. It's also set-up for screenings, presentations and talks, or dancing the night away under the disco ball.

## THE DETAILS

### CAPACITY

- Maximum capacity: 300
- Seated: 80
- Standing: 220

### THE PACKAGE

- Vault menu

### TIMINGS

- 6.30pm to 3am

### PAYMENT

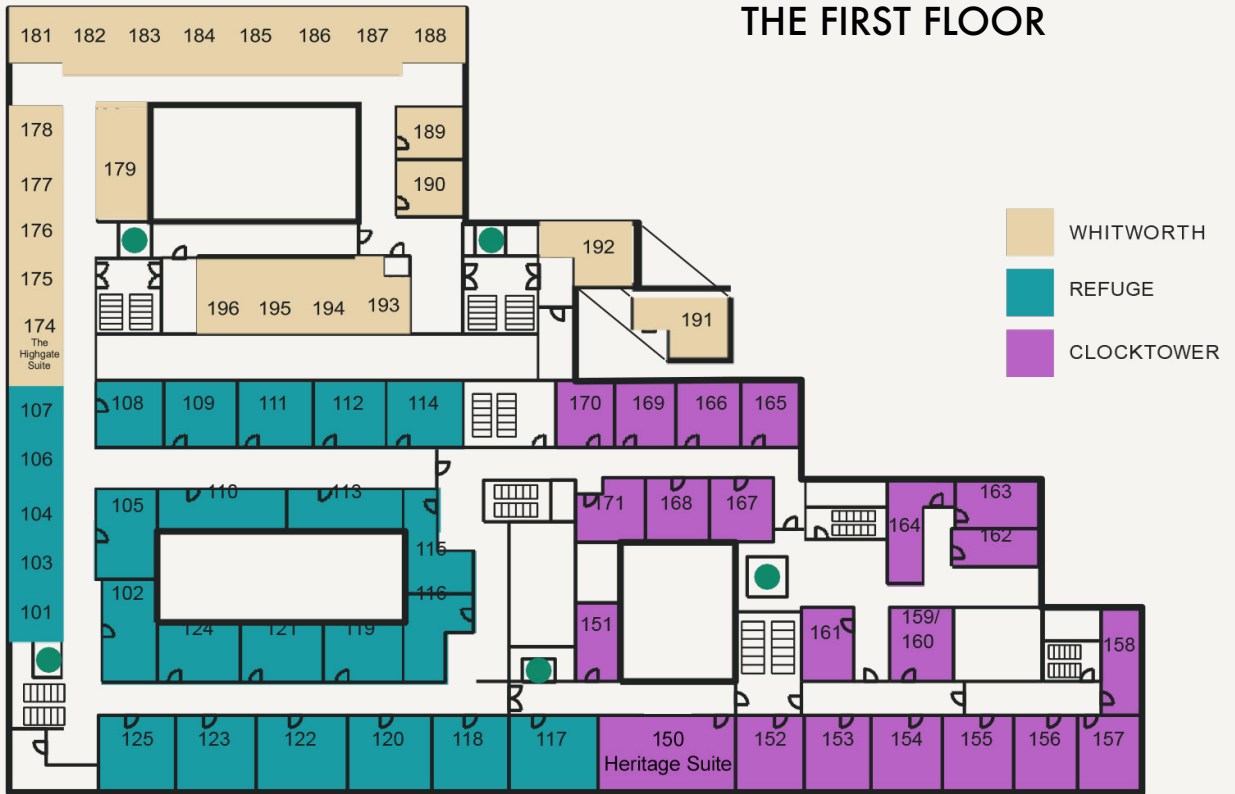
- Enquire by emailing [manchesterconference@ihg.com](mailto:manchesterconference@ihg.com)



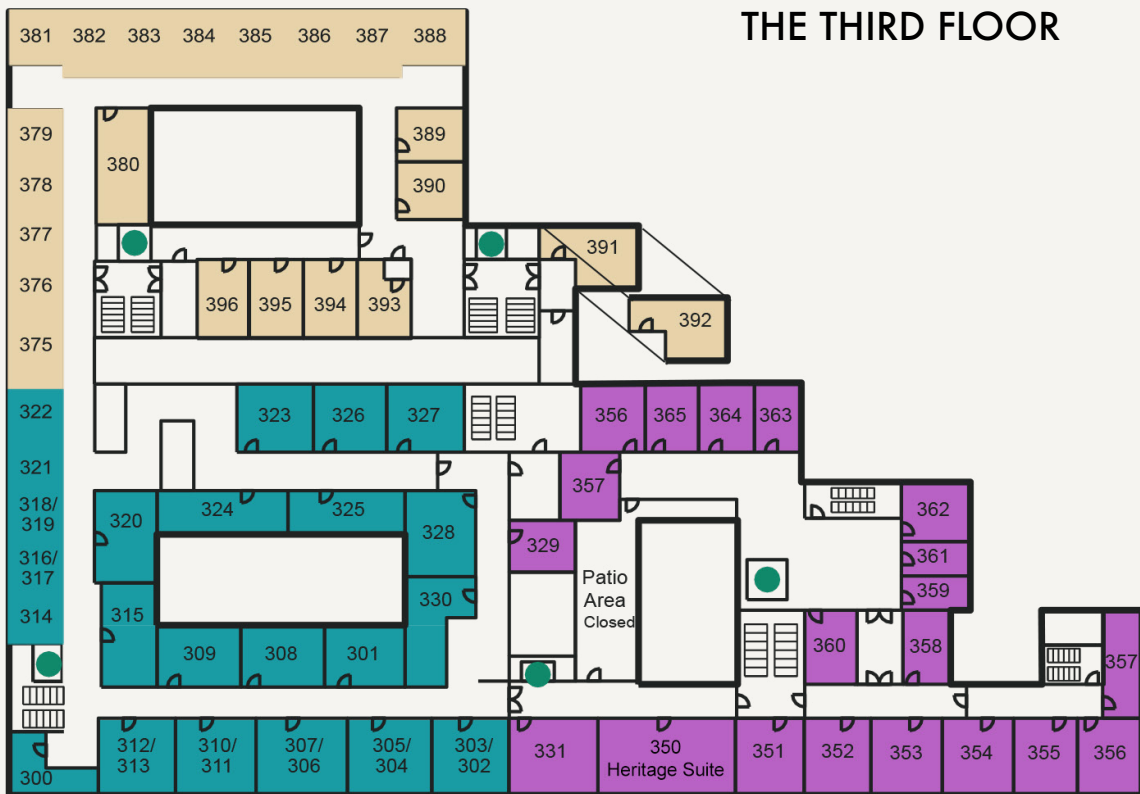
COPPER FACE JACKS  
ERY ESTABLISHED SINCE ... 189



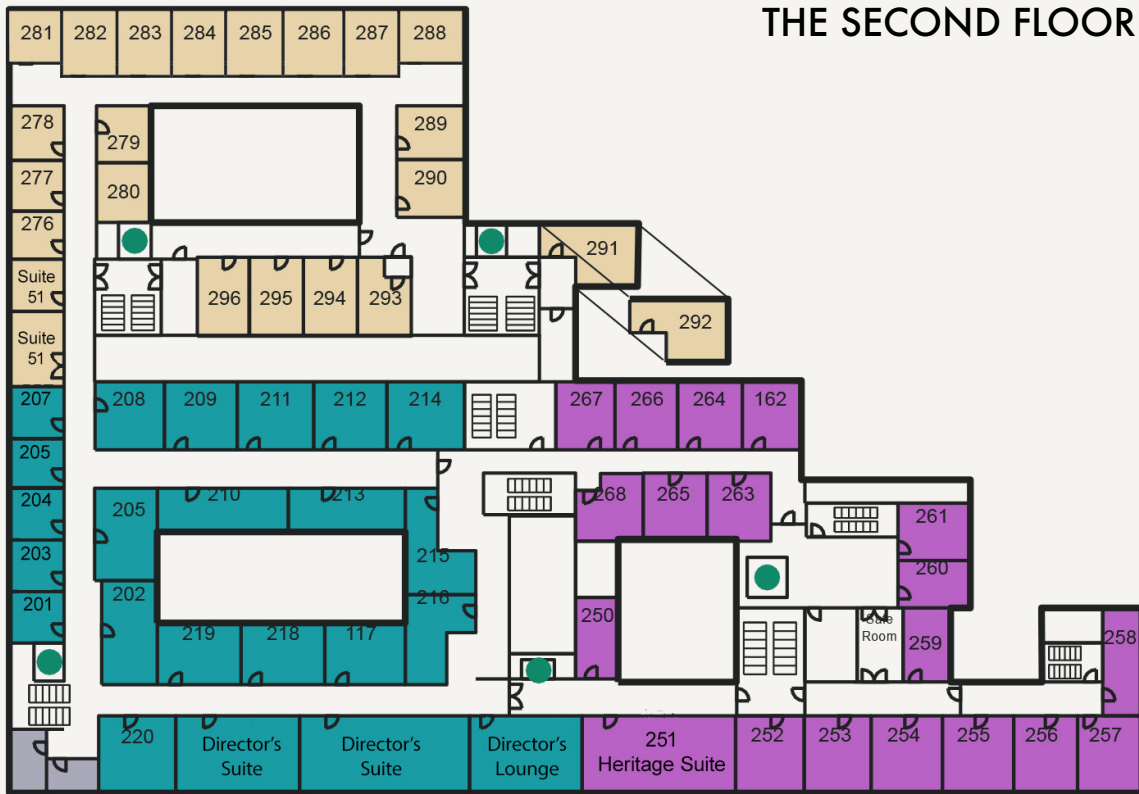
### THE FIRST FLOOR



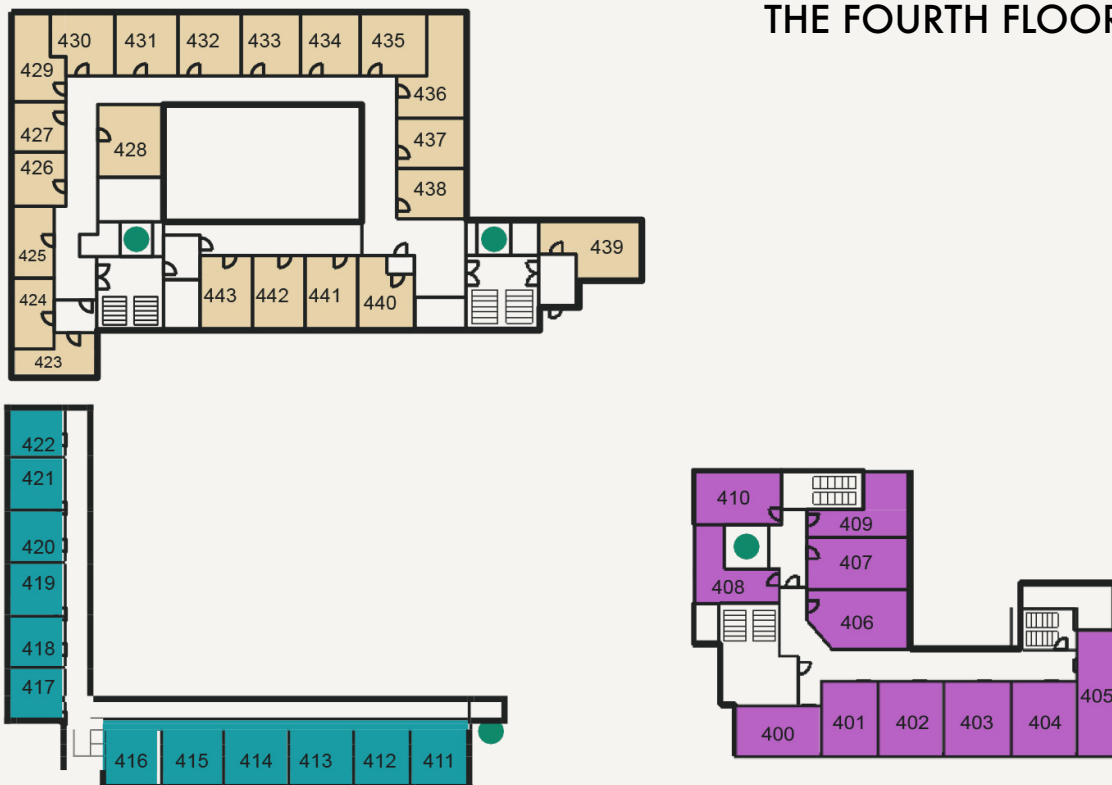
### THE THIRD FLOOR



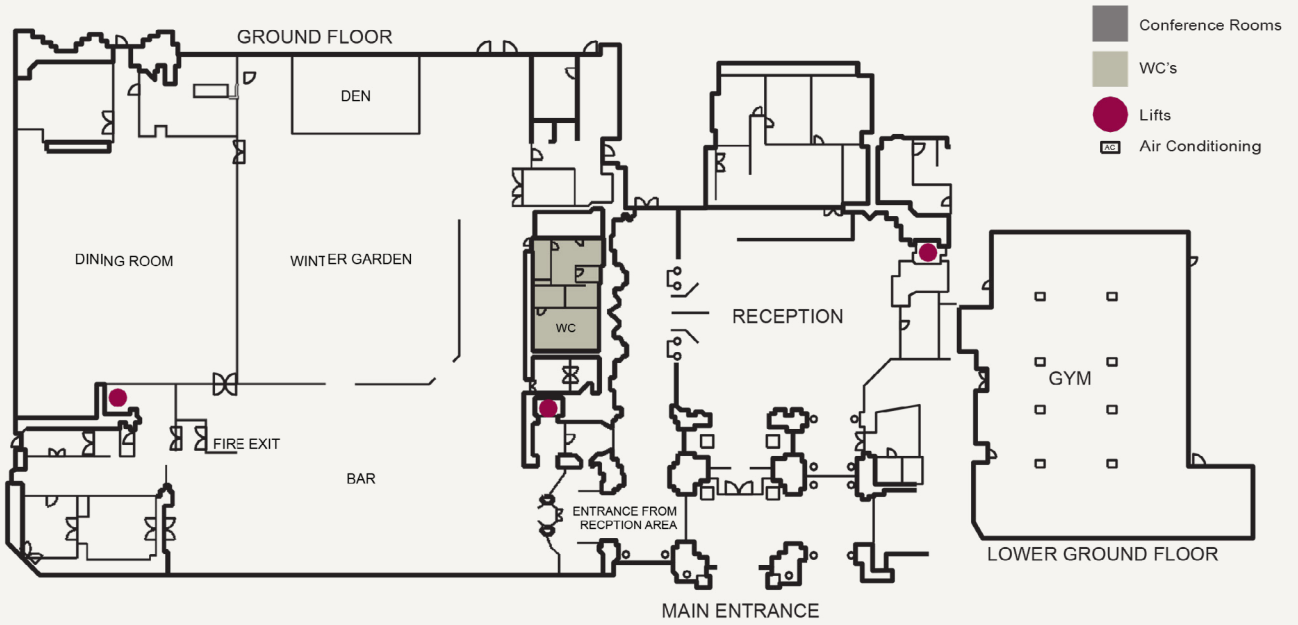
## THE SECOND FLOOR



## THE FOURTH FLOOR

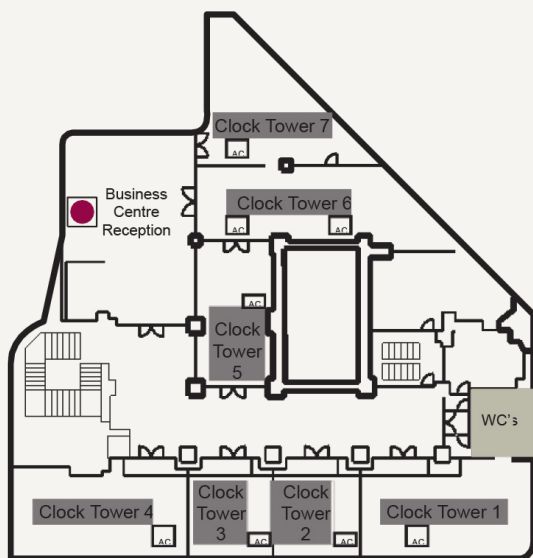


## THE GROUND FLOOR

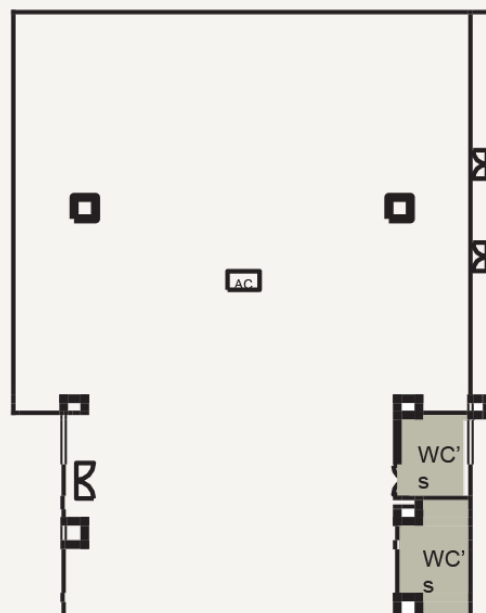


## CLOCKTOWER SUITES

Clocktower 1-7 located on the G floor

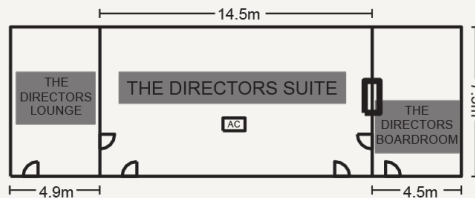


## WHITWORTH ROOMS



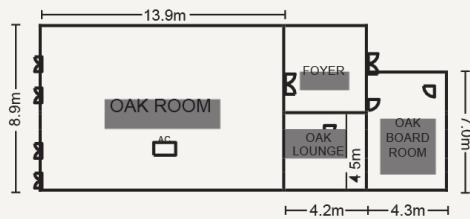
## DIRECTORS SUITE

Located on the second floor



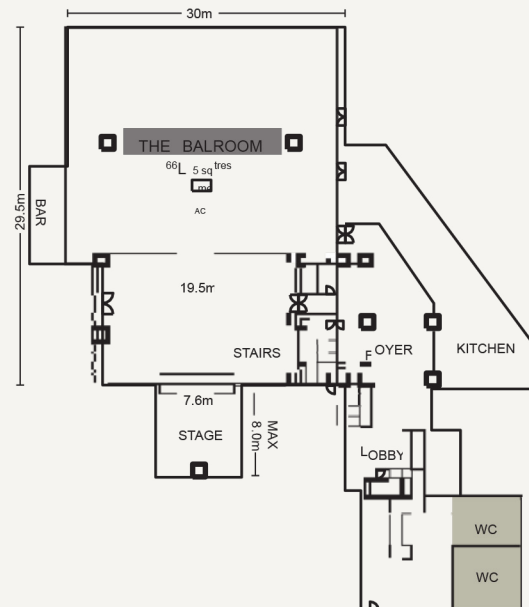
## OAK ROOMS

Located on the LG floor



## THE BALLROOM

Located on the B floor



## HOW TO FIND US

### AIRPORTS

- Manchester Airport - 8 miles
- Taxi to/from airport approx. £20

### MOTORWAYS

- M62 - 3 miles
- M6 - 20 miles

### TRAIN STATIONS

- Oxford Road - 2 min. walk, Piccadilly - 15 min. walk
- Direct trains to London (2 hrs), Birmingham (1.5hrs), Liverpool (30 mins)

# MEETING ROOM CAPACITY

ROOM	THEATRE	TS WITH BP	CABARET WITH BP	CABARET WITH FP	CLASSROOM WITH BP	CLASSROOM WITH FP	BOARDROOM	U-SHAPE	DINNER	DINNER DANCE	WEDDING	RECEPTION	EXHIBITION SPACE SQ M
BALLROOM	1000	1000	500	700	500	600	X	X	750	700	700	1000	885
WHITWORTH ROOMS 1&2	450	400	210	230	180	200	X	X	320	250	250	650	464.72
WHITWORTH ROOM 1	200	170	120	120	80	90	X	X	180	120	120	250	217.55
WHITWORTH ROOM 2	250	220	150	150	100	110	X	X	250	130	130	300	247.17
WHITWORTH ROOM 3	150	100	80	80	60	80	X	X	100	X	X	150	132
DIRECTORS' ROOM	100	80	60	60	40	50	40	40	70	X	70	100	109
DIRECTORS' BOARDROOM	20	X	X	X	X	X	16	12	X	X	X	20	33
DIRECTORS' LOUNGE	20	X	X	X	X	X	16	12	X	X	X	20	33
OAK ROOM	100	80	50	60	45	50	40	40	80	60	60	100	124
OAK BOARDROOM	20	X	X	X	X	12	16	16	10	X	X	15	30
OAK LOUNGE	10	X	X	X	X	X	10	X	X	X	X	X	19
CLOCKTOWER 1	50	X	X	30	X	30	24	24	20	X	X	30	62
CLOCKTOWER 2	20	X	X	10	X	12	12	12	X	X	X	15	33
CLOCKTOWER 3	20	X	X	10	X	12	12	12	X	X	X	15	33
CLOCKTOWER 4	45	X	X	25	X	24	22	22	20	X	X	30	44
CLOCKTOWER 5	45	X	X	25	X	24	22	22	20	X	X	30	56
CLOCKTOWER 6	60	X	X	32	X	33	30	30	30	X	X	30	50
CLOCKTOWER 7	60	X	X	35	X	30	20	20	30	X	X	30	73

# TECHNICAL INFO

ROOM	FLOOR	DAYLIGHT	PHONE POINT	ACCESS	BROAD BAND ACCESS	3 PHASE	DIMMER LIGHTS	POWER POINTS	LENGTH	WIDTH	AREA SQM	CEILING HEIGHT	PILLARS
BALLROOM	LG	Yes	Yes	Lift/ Stairs	Yes	Yes	Yes	Yes	29.5m	30m	885	7m	Yes
WHITWORTH ROOM 1	G	Yes	Yes	Direct	Yes	No	No	Yes	19	14.6	217.55	4.4	Yes
WHITWORTH ROOM 2	G	Yes	Yes	Direct	Yes	No	No	Yes	19	14.5	247.17	4.4	Yes
WHITWORTH ROOM 3	G	Yes	Yes	Direct	Yes	No	No	Yes	14.7	9	132	4.8	No
DIRECTORS' ROOM	2	Yes	Yes	Lift/ Stairs	Yes	No	No	Yes	14.5	7.5	109	5	No
DIRECTORS' BOARDROOM	2	Yes	Yes	Lift/ Stairs	Yes	No	No	Yes	7.5	4.5	33	5	No
DIRECTORS' LOUNGE	2	Yes	Yes	Lift/ Stairs	Yes	No	No	Yes	7.5	4.9	33	5	No
OAK ROOM	LG	Yes	Yes	Lift/ Stairs	Yes	No	Yes	Yes	13.9	8.9	124	4.65	No
OAK BOARDROOM	LG	No	Yes	Lift/ Stairs	Yes	No	No	Yes	7	4.3	30	4.65	No
OAK LOUNGE	LG	No	Yes	Lift/ Stairs	Yes	No	No	Yes	4.5	4.2	19	4.65	No
CLOCKTOWER 1	M	Yes	Yes	Lift/ Stairs	Yes	No	No	Yes	10.6	5.9	62	4.8	No
CLOCKTOWER 2	M	Yes	Yes	Lift/ Stairs	Yes	No	No	Yes	5.9	5.6	33	4.8	No
CLOCKTOWER 3	M	Yes	Yes	Lift/ Stairs	Yes	No	No	Yes	5.9	5.6	33	4.8	No
CLOCKTOWER 4	M	Yes	Yes	Lift/ Stairs	Yes	No	No	Yes	8.3	5.4	44	4.8	No
CLOCKTOWER 5	M	Yes	Yes	Lift/ Stairs	Yes	No	No	Yes	10.5	5.4	56	4.8	No
CLOCKTOWER 6	M	Yes	Yes	Lift/ Stairs	Yes	No	No	Yes	11	4.6	50	4.8	No
CLOCKTOWER 7	M	Yes	Yes	Lift/ Stairs	Yes	No	No	Yes	11	4.6	50	4.8	No



# CONTACT US

Oxford St, Manchester M60 7HA

0161 288 1111

[kimptonclocktowerhotel.com](http://kimptonclocktowerhotel.com) / [refugemcr.co.uk](http://refugemcr.co.uk)

[manchesterconference@ihg.com](mailto:manchesterconference@ihg.com)

SCAN TO SEE MENUS:



KIMPTON  
**CLOCKTOWER**  
HOTEL